

AGILE
GAMES

3-5

APRIL

2017

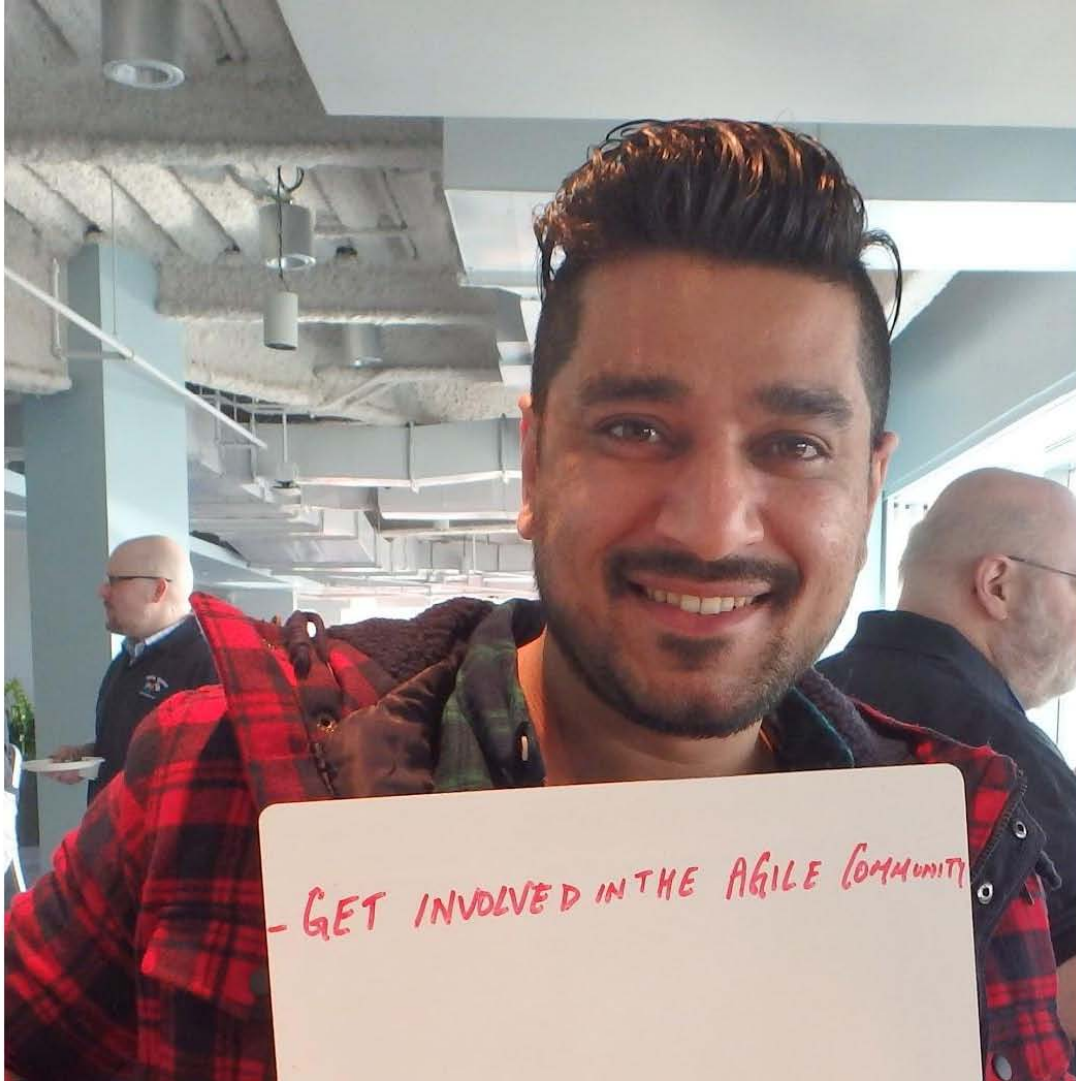
Marah. Rosenberg

@

GMAIL.COM



Bring Agile
to non-Agile
Teams

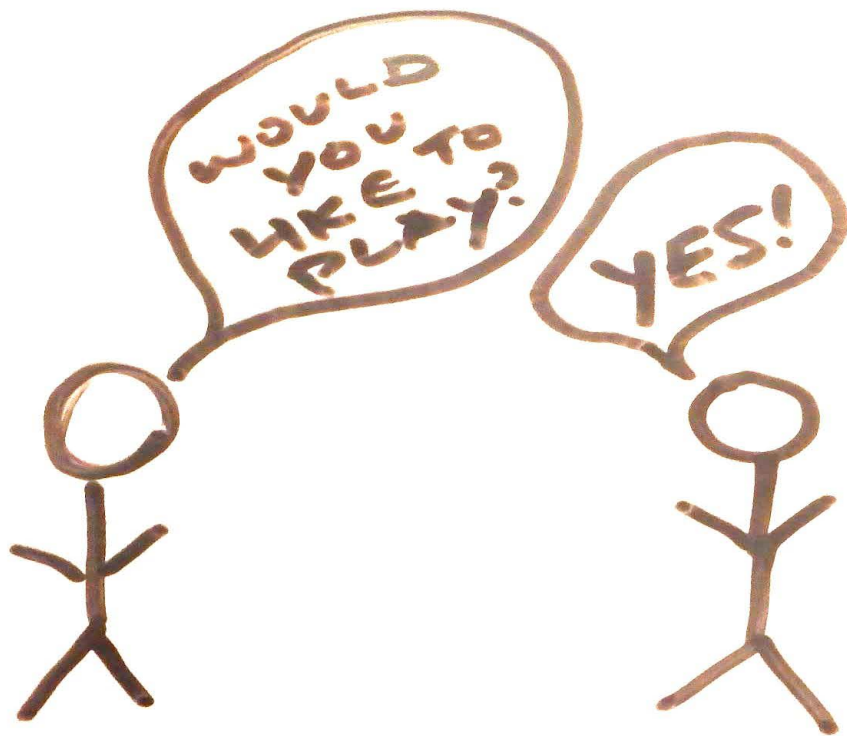


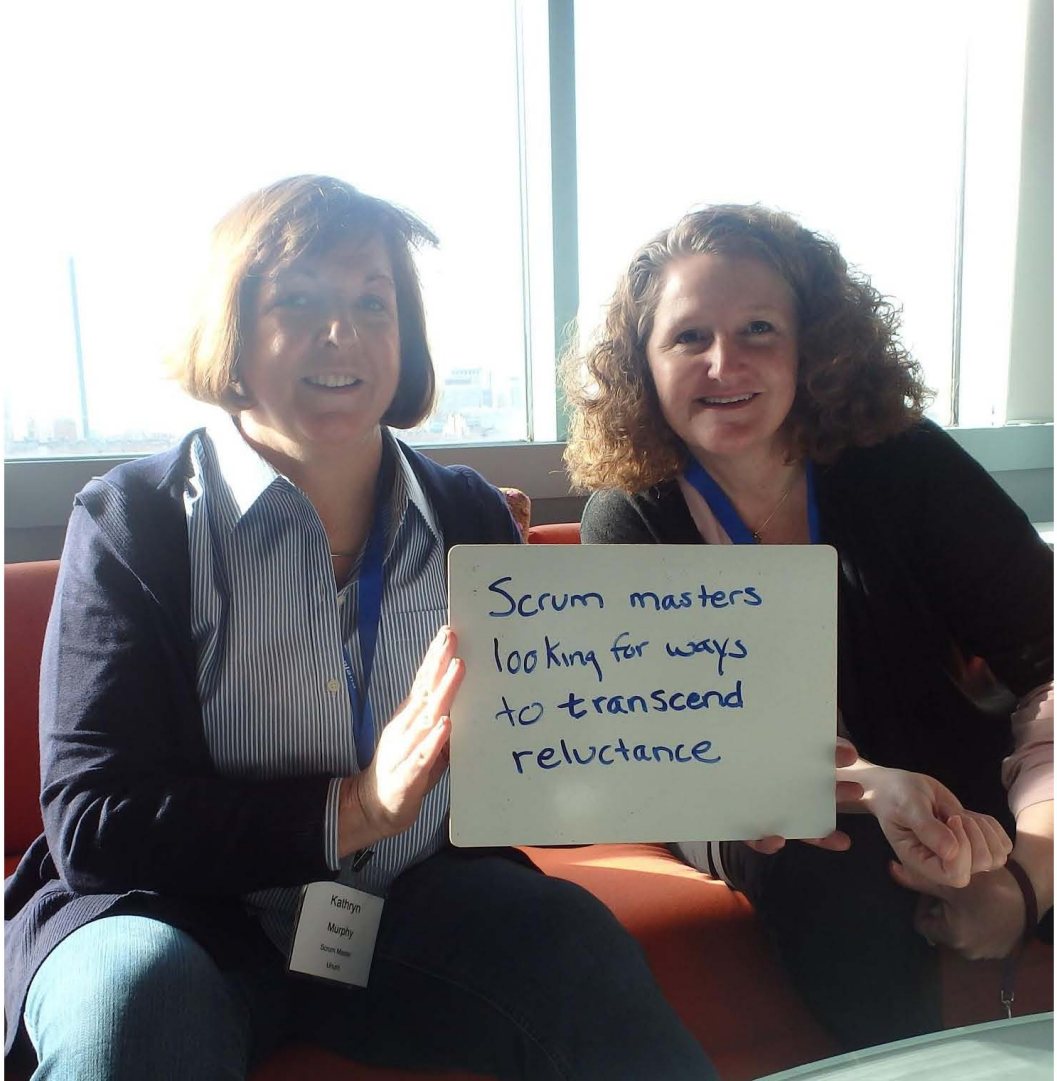
- GET INVOLVED IN THE AGILE COMMUNITY



What Makes it a Game?

Choice

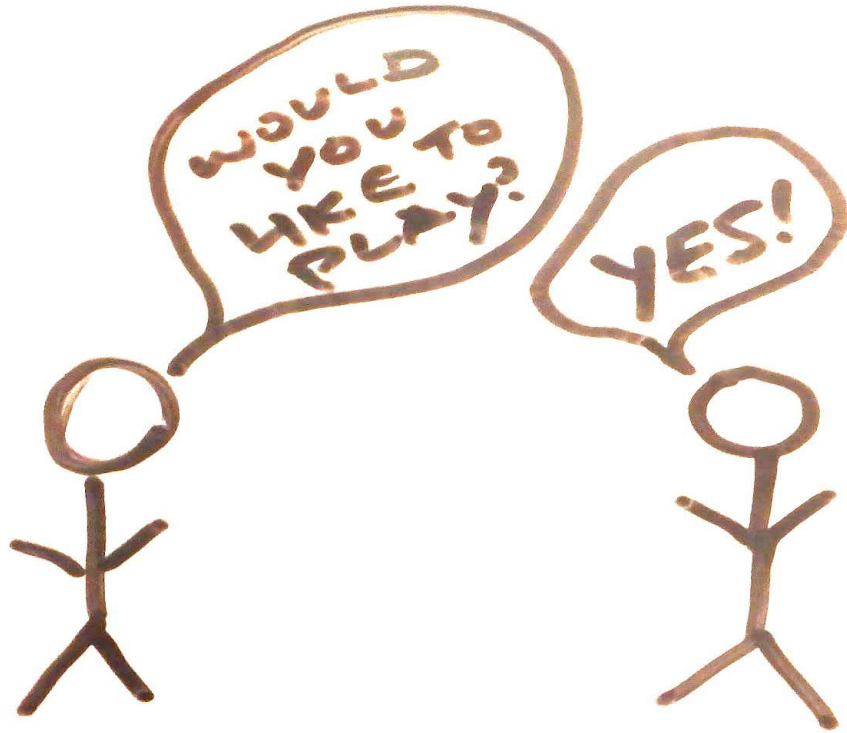




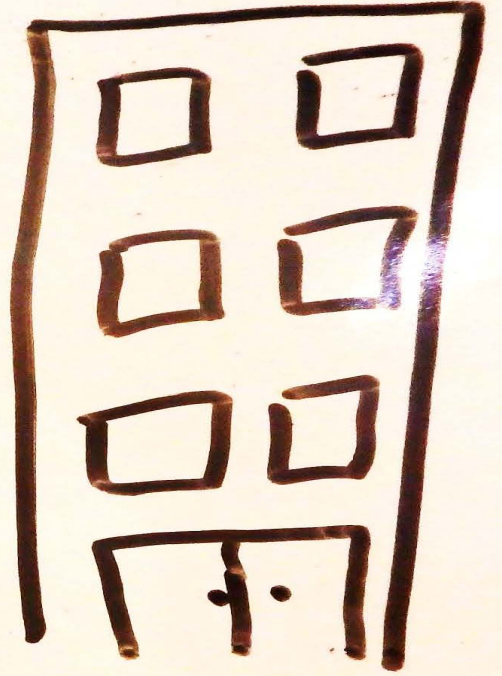
Scrum masters
looking for ways
to transcend
reluctance

Kathryn
Murphy
Scrum Master
Udacity

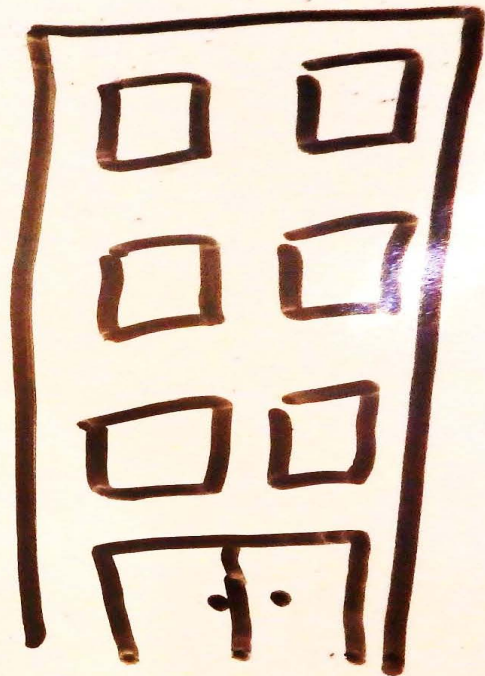
Players must Choose to Play



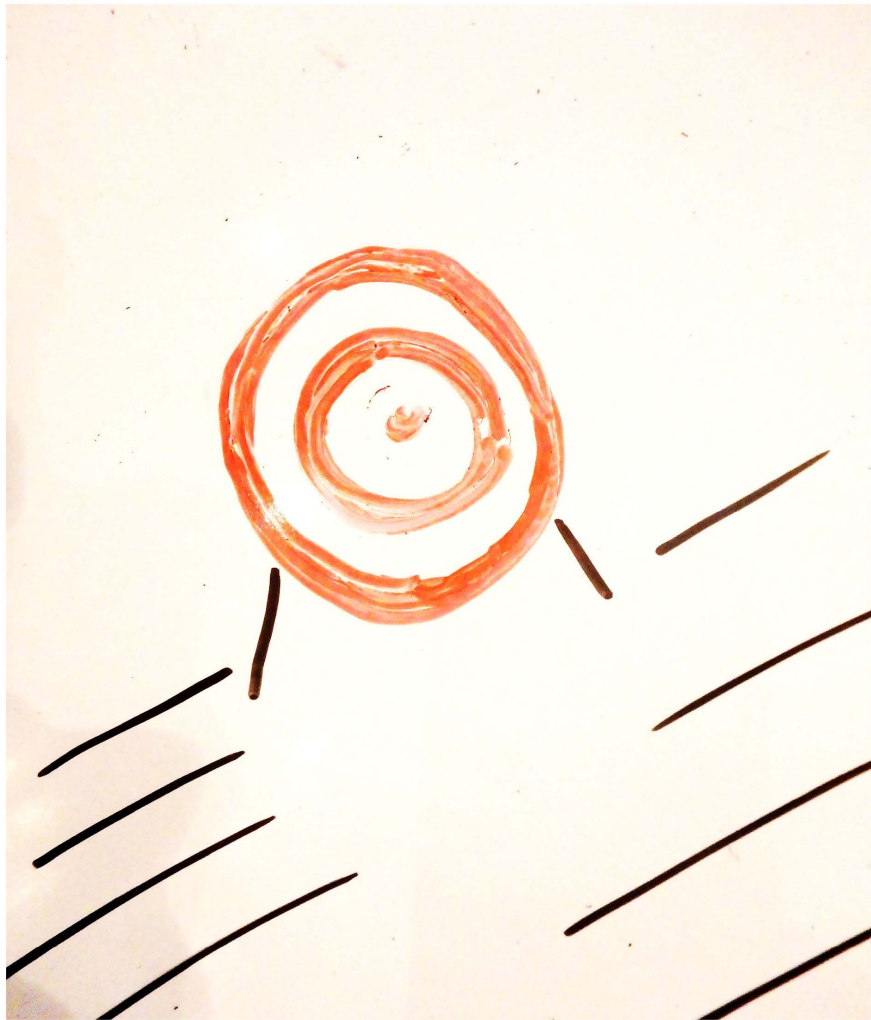
*** Provide Up Front Context, Potential Benefits, Expectations***



Choose adventure inside the game



Choose adventure inside the game
AGENCY

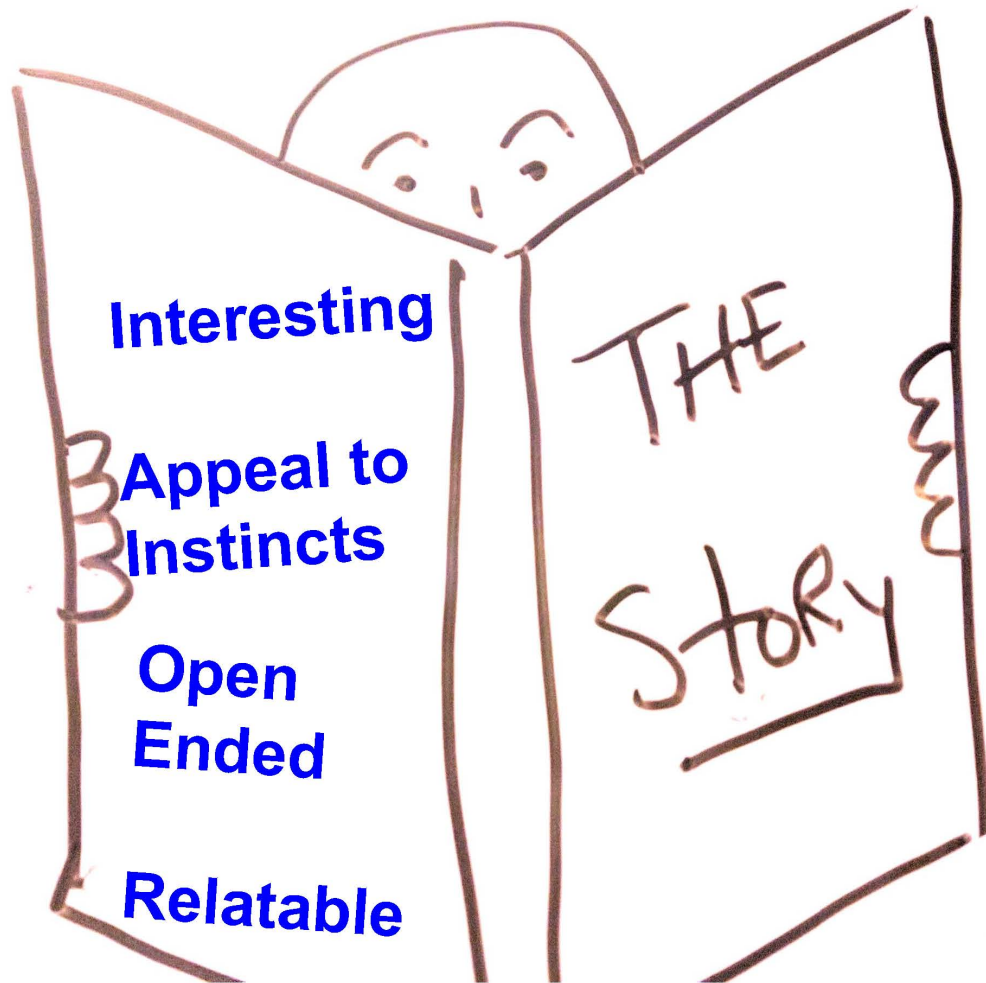


**ultimate
target mission/goal**

**Clear?
Achievable?
Rewarding?**

Short Term vs Long Term

Is It Still Fun Without A Goal?



Interesting

**Appeal to
Instincts**

**Open
Ended**

Relatable

THE

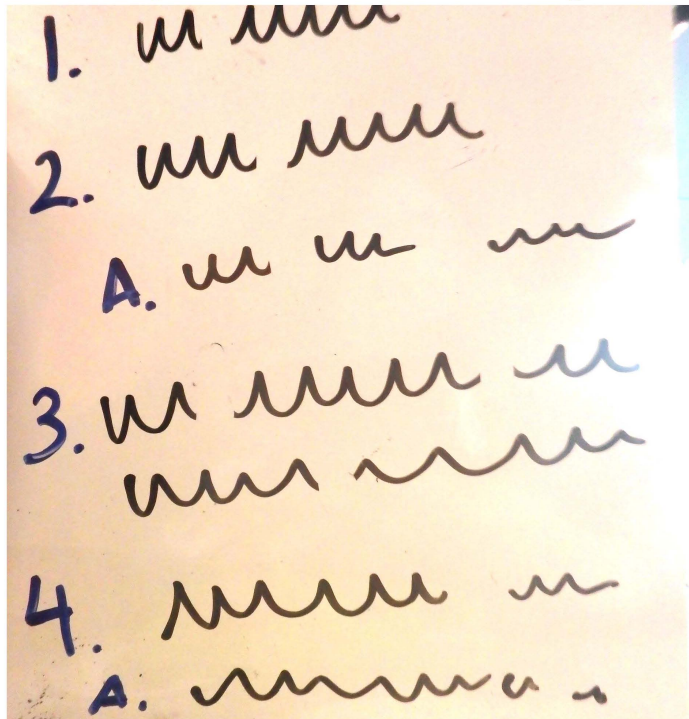
STORY

Rules

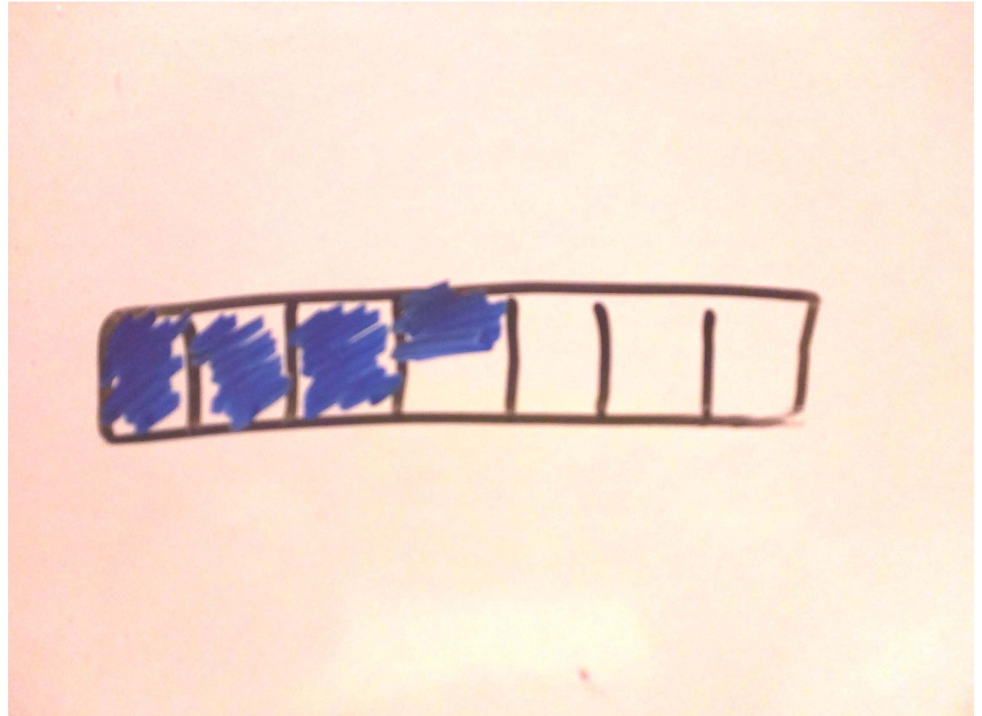
Fundamental Culture

vs

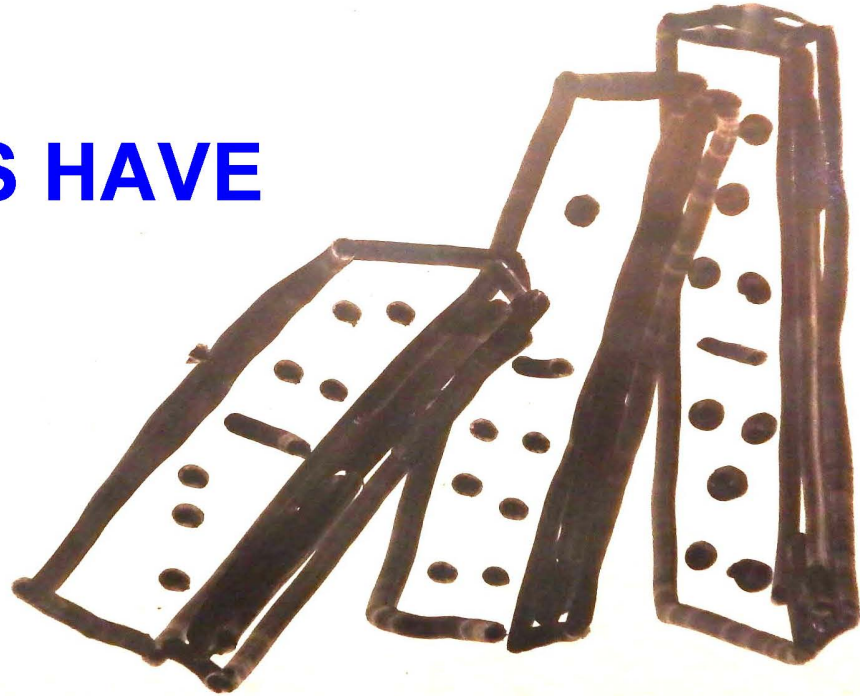
Operational Play



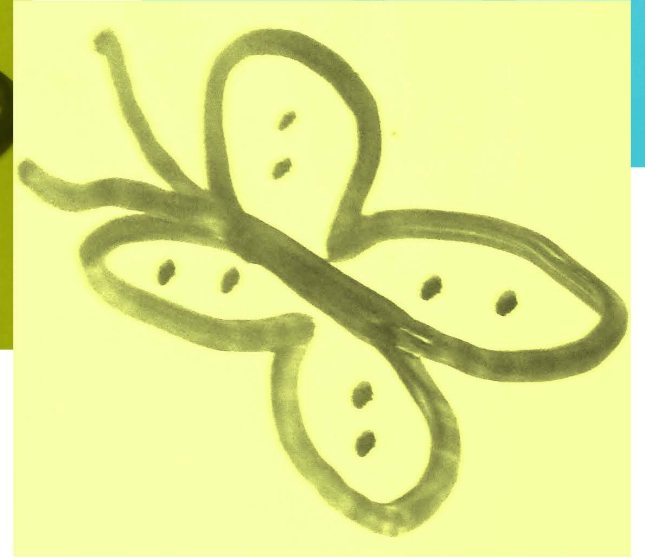
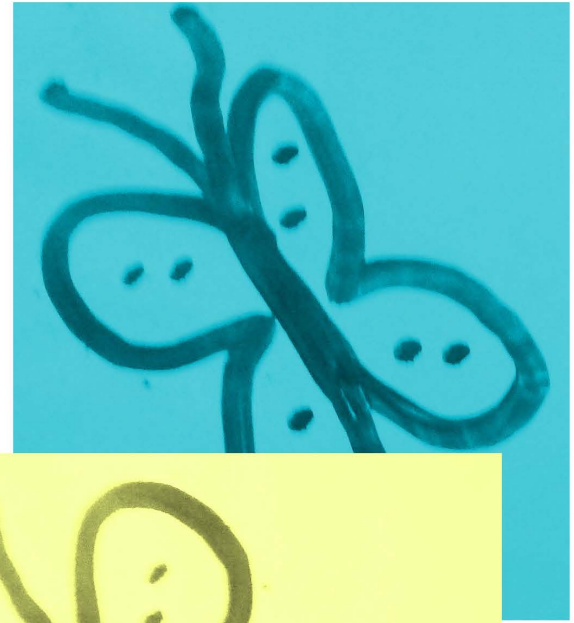
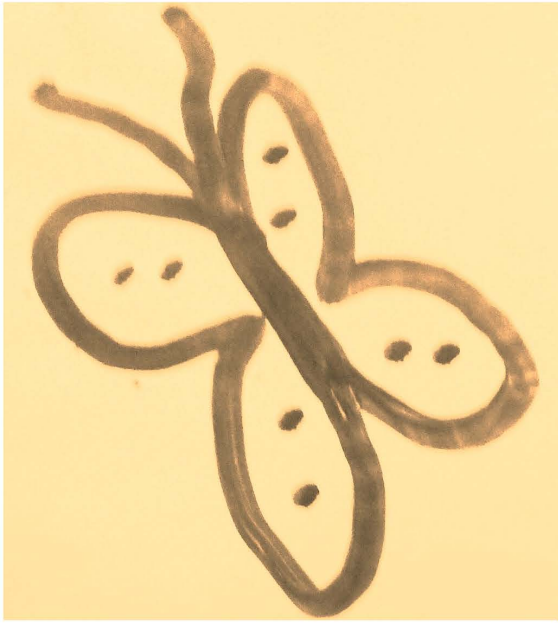
Visible Progress?



ACTIONS HAVE

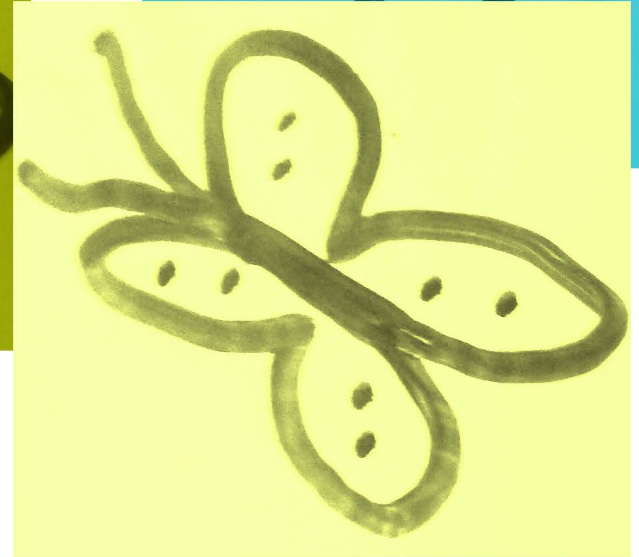
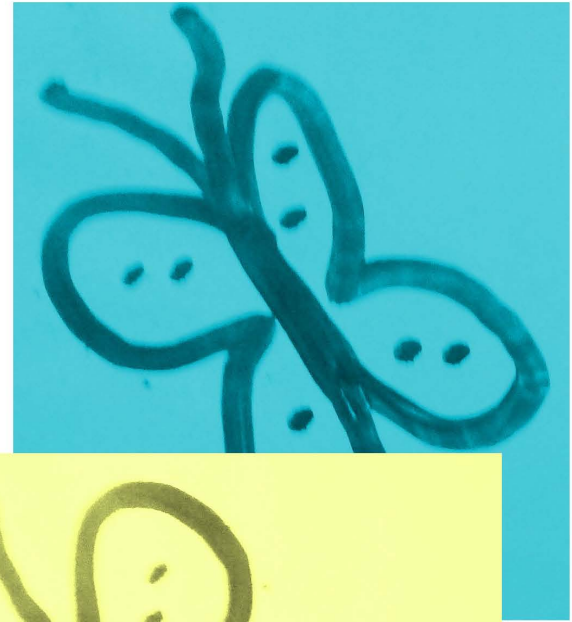
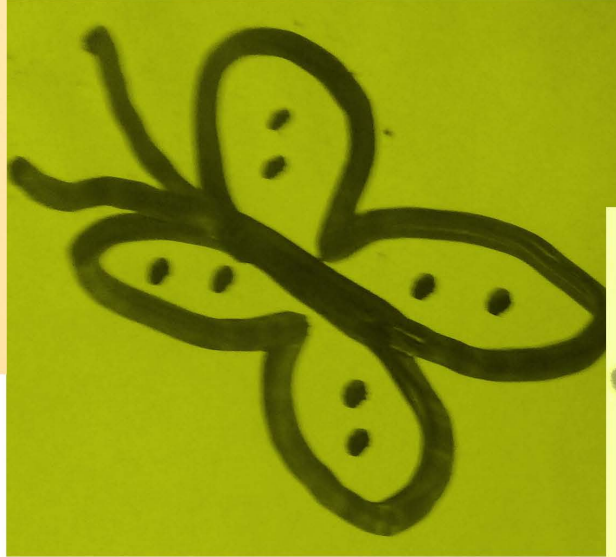
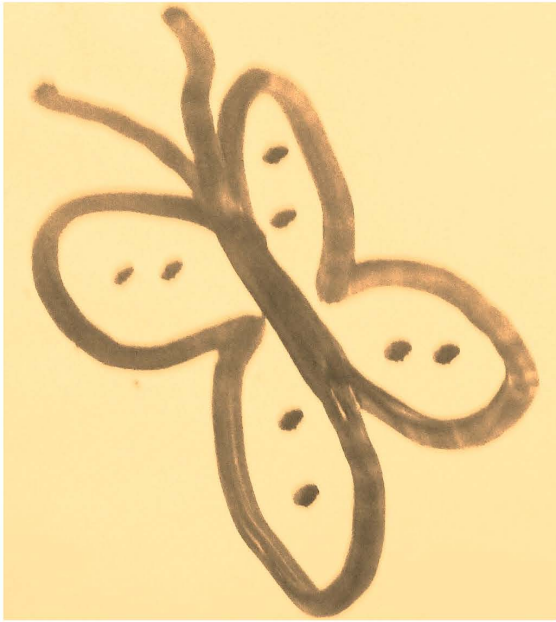


CONSEQUENCES



Sometimes Unexpected

and Surprising



Sometimes Unexpected



crayola Super Tips Washable Markers

Crayola Super Tips Markers have a unique, durable tip that's smooth, not scratchy. Use for coloring in large areas and the tip for adding details. Super Tips are great for school projects, doodling, and coloring fun. Crayola Washable Markers are formulated to easily wash from skin and most children's clothing.

QUALITY GUARANTEES!
Crayola products are made with the highest quality materials and are tested to meet the most rigorous standards for safety and performance. For more information, visit crayola.com.



AP
Approved for use in schools

WARNING: Contains small parts. Not for use by children under 3 years of age. For use only when used as directed. See back of package for more information.

WARNING & CARE INFORMATION:
FOR NOT BLEND: Crayola Markers are not to be used for coloring on fabric or other materials that are not intended for use with markers. Crayola Markers are not intended for use on fabric or other materials that are not intended for use with markers. Crayola Markers are not intended for use on fabric or other materials that are not intended for use with markers.

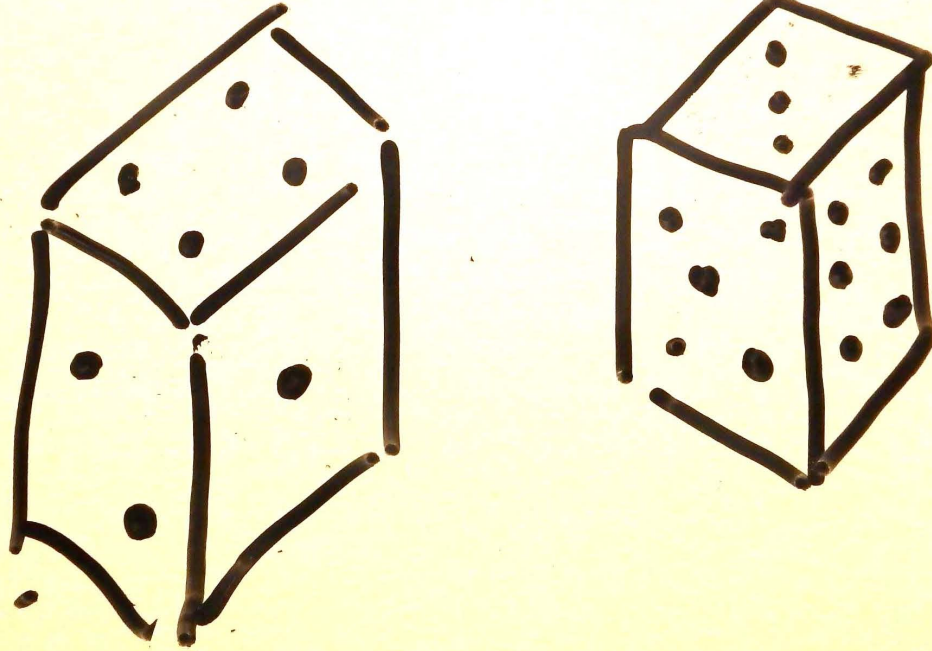
PROOF OF PURCHASE



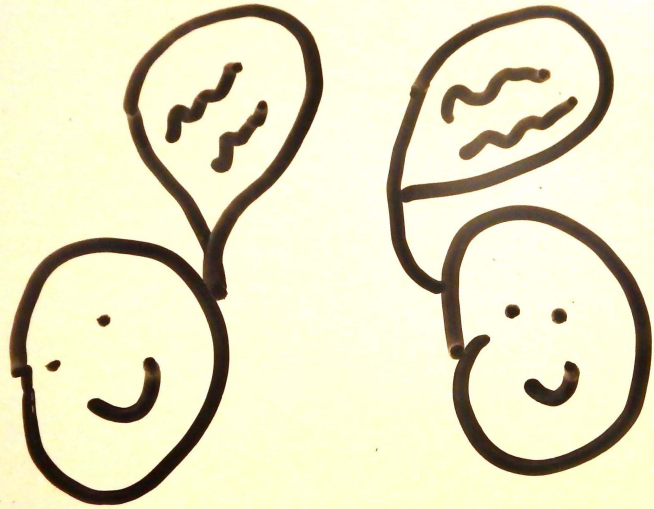
0 71662 08100 5

MADE IN VIETNAM

Chance / Randomness



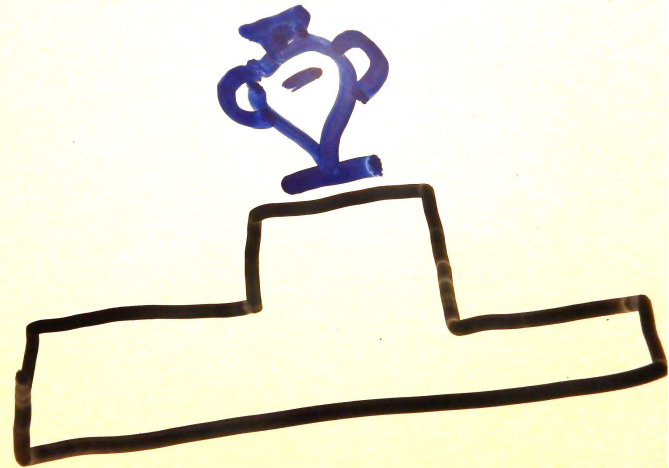
What is the impact on the players?



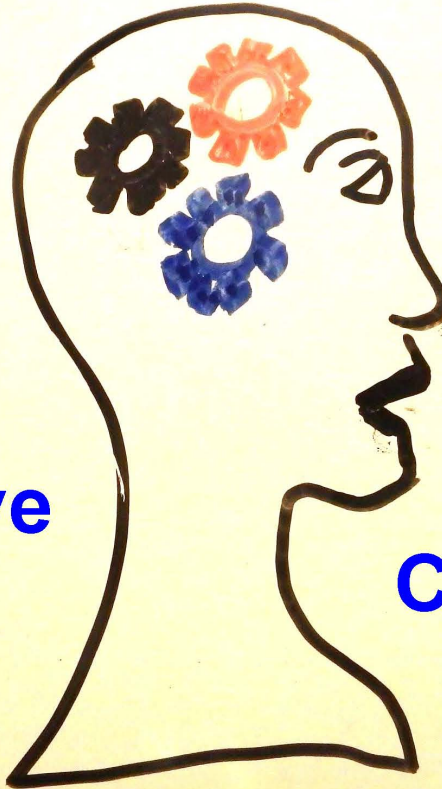
Support the experience?

Skills

**What's required ?
Is it fair ?**



Strategy



Cooperative

Competitive

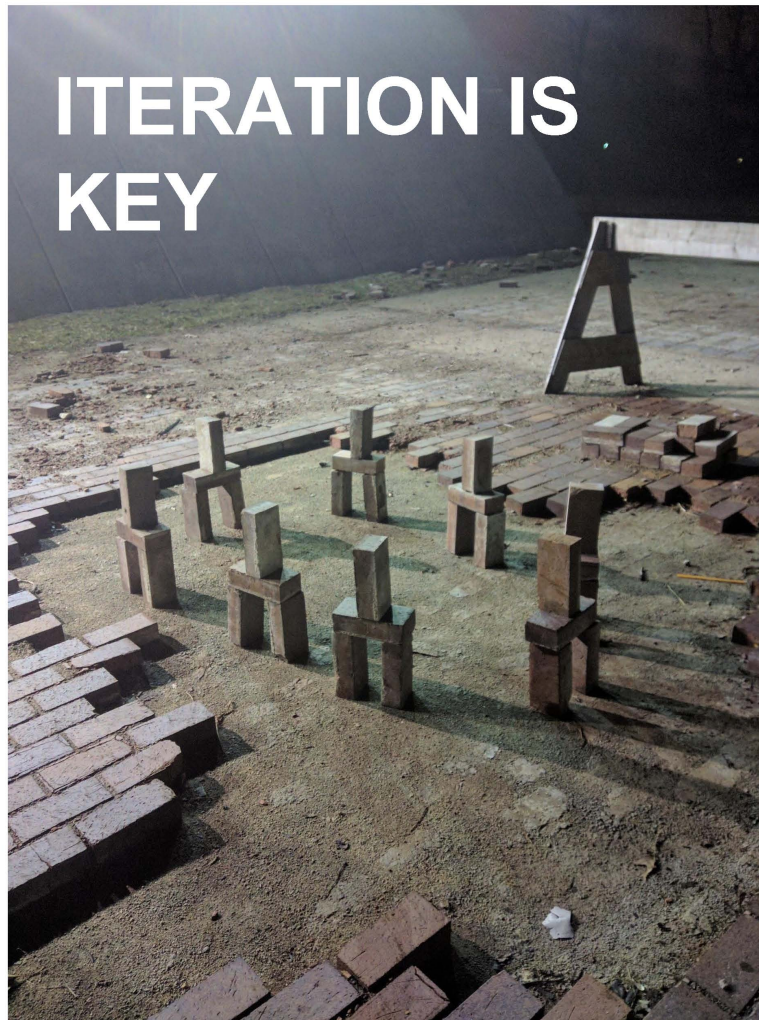
....

DESIGNING GAMES



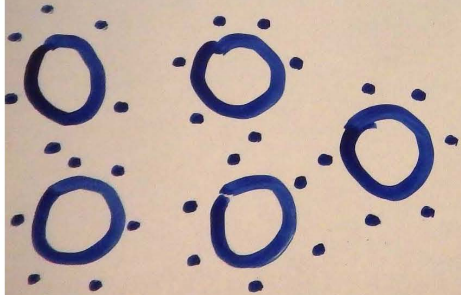
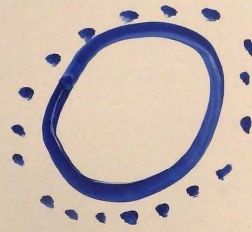
Simple \neq Easy

**ITERATION IS
KEY**

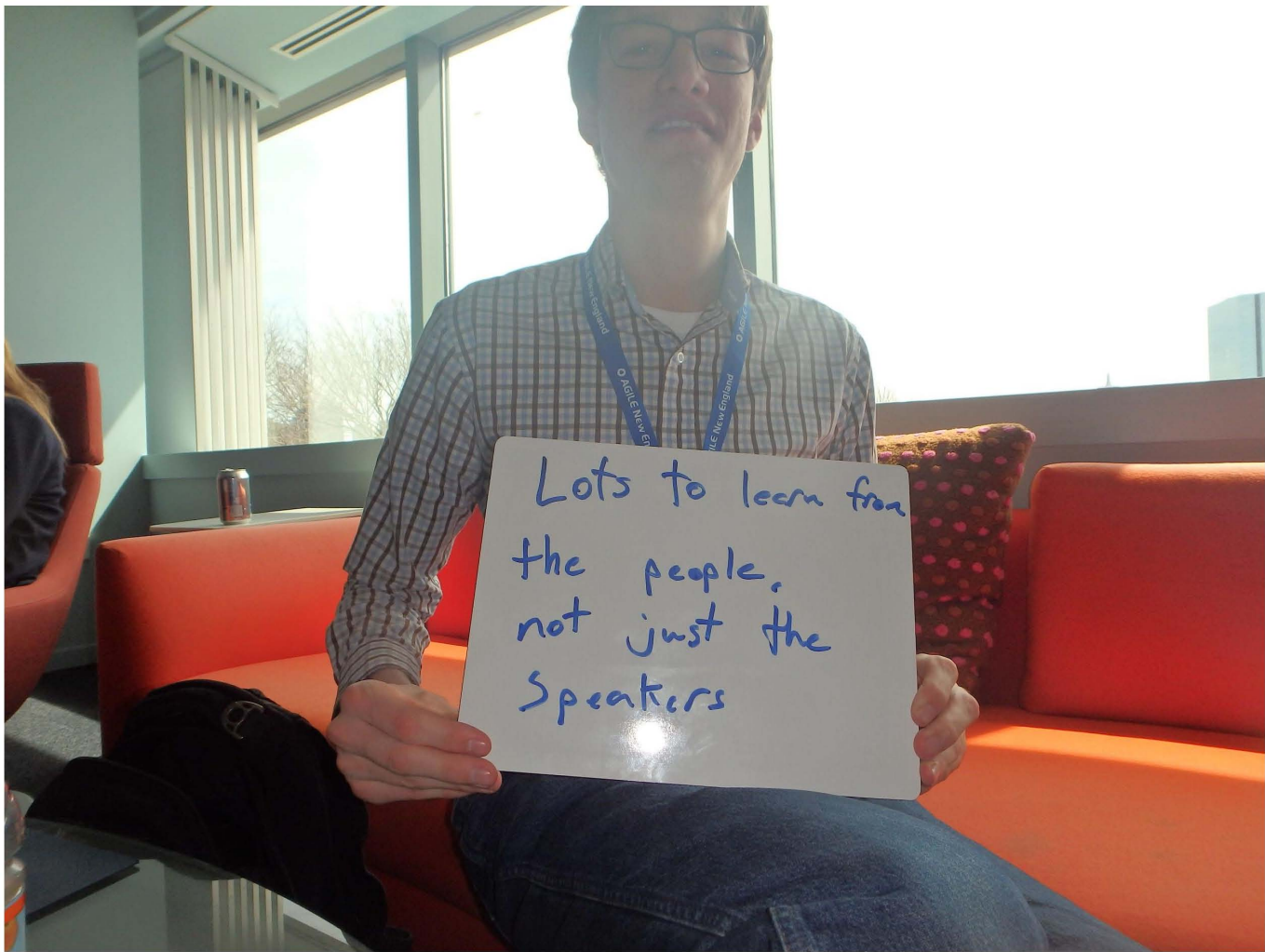


Same game w/ different
Setups = different
game

1 group of 30
vs
5 groups of 6



What is your game
trying to teach
?



Lots to learn from
the people,
not just the
Speakers

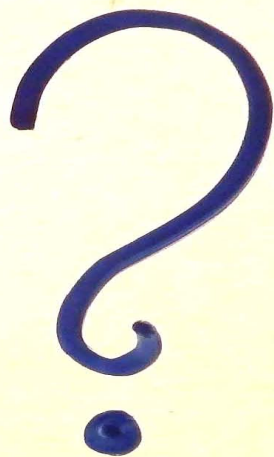
WHAT'S THE DIFFERENCE

GAMES

BETWEEN

ACTIVITIES

HOW DO WE EQUIP
PARTICIPANTS WITH
TOOLS TO MANAGE THE
INEVITABLE EXTERNAL
CONSEQUENCES & RESULTS



TRANSFORMATION

ALIENATION



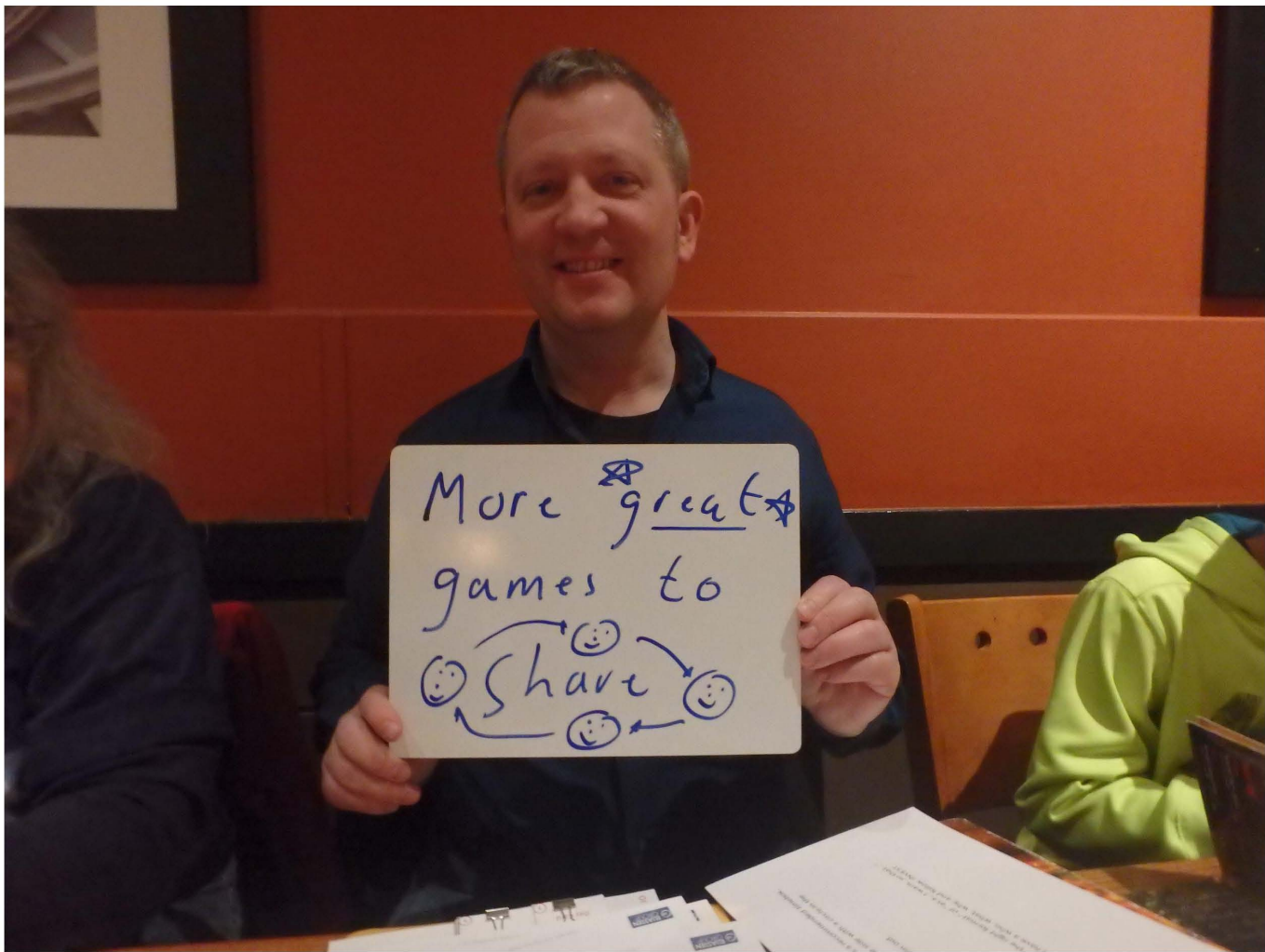
WHEN to use

WHAT to choose

HOW to introduce

JUNE 21

Agile Kendall



More ~~g~~ great ~~s~~
games to
😊 share 😊
😊 😊

Marah. Rosenberg

@

GMAIL.COM